



Village of Mamaroneck

Garbage, Rubbish & Recycling Collections

Village of Mamaroneck

Village Hall at the Regatta
123 Mamaroneck Avenue
Mamaroneck, NY 10543

www.villageofmamaroneck.org

FREE Emergency Alerts for Mobile Devices

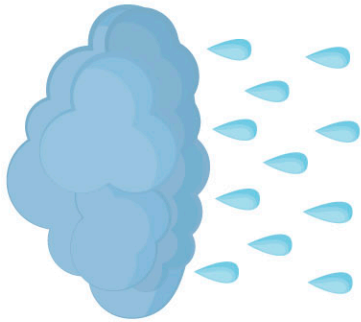
Swift911 Public

Text
SWIFT911
to
99538

Stay Informed!
During Emergency Situations, Important Events and More

Ensure You **KNOW**
Manage Your Alerts
Customize Your Information

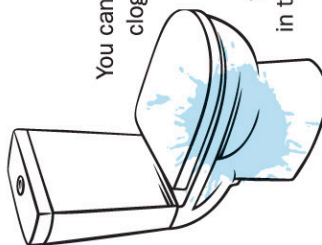
SwiftReach www.swiftreach.com 1.800.794.3891



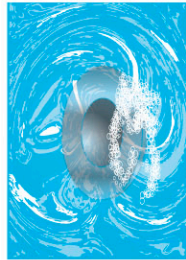
Storm Sewer Water

The Village of Mamaroneck has a separate storm sewer from the sanitary system. Anything that enters the storm system is conveyed without treatment to the rivers and into the harbor and Long Island Sound. This includes detergents used to wash cars, oil, bottles, lawn fertilizer, pesticides, and animal waste. This pamphlet can help guide you on how to properly dispose of chemicals.

Sanitary Sewer Knowledge



You can help prevent blocked sewer lines, clogged equipment and sewage pump stations, and polluted water in Mamaroneck Harbor if you're careful about what you flush in the toilet, dump in the sink, pour in the storm drain or onto the ground.



Wipes (including the "flushable" type), paper towels, rags, diapers, sanitary napkins, bandages, and cat litter are all causes of sewer problems today. These items do not break down and often clog sewer lines and are the cause of backups and overflows onto our streets. They can also damage the waterways we use for fishing and recreation.

Other overlooked substances **that should not be poured down the drain or flushed** include fats, oils, and grease (FOGs). They solidify in pipes and create a hard blockage. Much of the daily maintenance in the village sanitary sewer pipes is required because of solidified FOGs. **To dispose of FOGs properly, collect them in any sealable jar (like a used sauce jar) and dispose of it with your regular garbage.**

Chemicals (such as paint, anti-freeze, solvents, pesticides, herbicides, and fuel) and prescription/over-the-counter medications are toxic and pollute our streams, rivers, harbor, and Long Island Sound. The sanitary sewage is generally treated for biological material. Most hazardous materials pass through the system and into Long Island Sound. See the paragraph titled **Hazardous Waste** in this pamphlet for information on the proper disposal of chemicals and prescription/OTC medication.

Hours of Operation

Mamaroneck DPW

313 Fayette Ave.

(914) 777-7745

7 am–3:30 pm Mon.–Fri.
except holidays

Recycling Center

313 Fayette Ave.

7 am–5 pm Mon.–Fri.

9 am–1 pm Sat.

subject to change

Please call DPW for skipped or missed pickups of garbage, rubbish, or recycling.

Garbage Collection

Garbage is collected twice a week on Mondays and Thursdays OR Tuesdays and Fridays, depending on your location, **EXCEPT on holidays**.

Place it in an accessible location the night before or by 5:30 a.m. on your collection day. It must be bagged or placed in metal or plastic barrels. Garbage sheds are permitted. Pathways must be unobstructed and cleared of snow and ice.



Rubbish will be collected twice a week on your garbage collection days, **EXCEPT on holidays**. Place it at the curb the night before or by 5:30 a.m. on the morning of the pickup. Maximum quantity per pickup: five (5) 32-gallon barrels or the equivalent.

ACCEPTABLE RUBBISH Furniture, mattresses, sofa bed (metal frames must be removed), carpeting (rolled and tied; rolls must not exceed 4 feet in length), latex and oil paint cans (**paint must be hardened before disposal; remove lids from cans**).



Christmas Trees are chipped and used for composting to keep them out of the regular waste stream. A decorated Christmas tree could contaminate the compost and **it is important to remove all tinsel, lights, and decorations prior to placing it curbside**. They will be picked up by the DPW after the holiday season.



UNACCEPTABLE RUBBISH ITEMS The following items **will not** be collected at the curb or accepted at the Recycling Center on Fayette Avenue:

- Construction debris, building materials, rubber tires, tree stumps, dirt, stones, clay flower pots, ceramic sinks, bathtubs, toilets and all other non-burnable materials.
- Extra-large items such as pianos, pool tables, whole bathtubs. Call a private carter for collection.
- Hazardous waste such as acids, alcohols, garden chemicals, pesticides and solvents. See next column for information on Hazardous Waste.
- Radioactive waste.
- CFLs & other fluorescent lights. Take to Home Depot, Lowe's, or to the County's Household Material Recovery Facility (H-MRF).

Bulk Metal & Appliances

Bulk metal waste is picked up at the curb once a month on the Wednesday scheduled for your district (see last page), **except** when that day is a holiday. There is no need to call in advance to schedule a pickup. Do not place at the curb more than 24 hours before collection.

WHAT TO RECYCLE—refrigerators or freezers with doors removed, stoves, air conditioners, lawn mowers, boilers, snow blowers, pipes, and other metal items. Please note: Empty propane tanks should be taken to the Westchester H-MRF (see **Hazardous Waste**) or back to the vendor to be refilled or replaced.

Hazardous Waste

Westchester County's Household Material Recovery Facility (H-MRF) in Valhalla accepts household hazardous waste and other items that require special handling.



These items include chemicals such as pesticides, herbicides, automotive and pool fluids, flammable liquids, as well as expired or unused prescription or over-the-counter medications. Also electronic waste (computers, TVs, laptops, monitors, fax machines, copiers, digital cameras, cell phones, etc.), fluorescent light bulbs, propane tanks, batteries, tires, household appliances, mercury thermometers, fire extinguishers, documents for shredding, and more. No paint is accepted.

Residents must make a reservation either online (www.westchestergov.com/hmrf) or by telephone (914-813-5425), and show a valid driver's license on arrival. Call or go online for directions and additional information.

Medical Needles, Syringes & Lancets

"Sharps" should be collected in a sturdy

container with a screw top, such as a detergent bottle. Label it "Sharps" with a waterproof marker. Place each used needle, syringe or lancet in the container immediately after use, secure the screw top and keep the container safe from children. When full, seal with heavy tape and place in your trash, never in a recycling bin.



An alternative is to take the sealed and labeled container to a hospital, nursing home or other health facility that accepts sharps.

Food Composting

The Village of Mamaroneck offers a composting program that mainly includes food; this is different from our yard waste composting and should not be mixed. Collect all your food items into a compostable bag and bring it to the recycling center. The food waste is taken to the facility that will process it for compost. For more information, please see the back of the calendar page or visit the Department Public Works page on the Village of Mamaroneck website.





How To Recycle In The Village of Mamaroneck



Place your recyclables in a recycling bin, a cardboard box, or an open garbage can (*never a plastic bag*) and put them at the curb Tuesday nights or by 5:30 a.m. on Wednesday mornings, **except on holidays**.

You may also take recyclables to the Recycling Center at 313 Fayette Ave., 7 a.m. to 5 p.m., Monday through Friday, and 9 a.m. to 1 p.m. on Saturdays, **except on holidays**, subject to change without notice.

Recycling bins may be purchased for \$9 each at the Village offices at the Regatta or at the DPW offices on Fayette Ave. They will be delivered to your home on your next garbage collection day.

For more information: Call the Department of Public Works (DPW) at 777-7745.

RECYCLING—IT'S THE LAW!
THE VILLAGE OF MAMARONECK
WILL NOT PICK UP TRASH
CONTAINING RECYCLABLE MATERIALS.
FOR MORE INFORMATION ON
RECYCLING, GO TO
www.westchestergov.com/hmrf
OR CALL 914-813-5425.

TEXTILES RECYCLING

Textiles in good or poor condition, including tattered, worn, and stained textiles (bed linens, towels, clothes, drapes, shoes, handbags, soft toys, etc.), can be deposited in the Village's textiles recycling bin at the Village's Recycling Center.

E-WASTE

Computers, monitors and TVs are collected curbside four times a year on the last Wednesdays in January, April, July, September, and December. You must call the Department of Public Works (914-777-7745) in advance to schedule a pickup.



Or take your E-waste (computers, monitors, TVs, radios, printers, keyboards, fax machines, cd/dvd players, wiring & cabling, cellphones, inkjet, laser and toner cartridges) to the Village of Mamaroneck Recycling Center on Fayette Avenue. Exceptions: large appliances such as washers, freezers, stoves, air conditioners, refrigerators (see Bulk Metal & Appliances).

WHAT TO RECYCLE: computers, monitors, TVs, radios, printers, keyboards, fax machines, circuit boards, chargers, GPS units, routers, audio & video equipment, telecom & networking equipment and mobile devices.


COMMINGLED RECYCLABLES

PLASTICS, GLASS & METALS

Rinse clean and place together in a bin or other container, **NEVER A PLASTIC BAG**. Labels need not be removed. Include all plastic and metal caps and lids.



WHAT TO RECYCLE:

Plastic—all plastics, any color, coded 1 through 7. 

Glass—bottles and jars, any color or size.

BEVERAGE CARTONS—see below.

Metals—food and beverage containers, empty aerosol cans, aluminum containers, foil and trays.

WHAT NOT TO RECYCLE—non-coded plastic, plastic bags, foam or vinyl, Styrofoam, metal utensils, hangers, windows, light bulbs, mirrors, scrap metal, wire, pipes, paint cans, auto parts, or containers that held hazardous materials such as motor oil, pesticides or solvents.

BEVERAGE CARTONS—beverage cartons, including refrigerated "gable-top" cartons typically used for milk, cream and juice and non-refrigerated cartons containing non-dairy milk beverages, soup, broth, etc. Rinse and place them in your bin for commingled recyclables (plastics, glass and metals), not with paper and cardboard.

PAPER AND CARDBOARD



Place loose in a recycling bin, cardboard box, or brown paper bag, *never a plastic bag*.

Remove plastic liners or packing materials and excessive adhesives.

WHAT TO RECYCLE:

PAPER—newspapers, glossy inserts, magazines, phone books, catalogs, junk mail, paper bags, office paper, tissue paper, and other paper goods.

CARDBOARD—corrugated and smooth/compressed cardboard, such as tissue, pizza, shoe, and cereal boxes.

WHAT NOT TO RECYCLE—plastic packing materials, books (soft-cover or hardcover).

Organic Yard Waste

Between April 1 and October 31—organic waste (leaves, clippings, brush, plants, branches, etc.) is picked up after garbage collection on your **second** garbage collection day (either Thursday or Friday).

It must be contained in biodegradable brown paper bags or open garbage cans (with drain holes at the bottom) and placed at the curb the night before or by 5:30 a.m. on the morning of the pickup.

WHAT TO RECYCLE

Leaves, clippings, brush, plants, branches, etc. Brush and branches (no larger than 6 inches in diameter) should be bundled and tied (with a maximum length of 4 feet and a maximum weight of 75 pounds).

WHAT NOT TO RECYCLE

Plastic bags, rocks, dirt, tree stumps, large logs or trash.

Gardeners may dump yard waste (bagged or loose) at the DPW transfer station on Fayette Avenue on Thursday and Friday afternoons between 12:30 and 2:30 p.m. Permits, available at the DPW offices on the second floor of 313 Fayette Avenue, are required. Vouchers for the permits may be purchased, for a fee of \$61 for up to every four (4) cubic yards of material, from the Clerk's Office, 123 Mamaroneck Avenue, between 9 a.m. and 4:30 p.m.

Fall Leaves

Curbside leaf pickup occurs during the months of November and December, when leaves must be raked loose to the curb, never more than 3 feet into the street. Leaves may also be placed at the curb in biodegradable brown paper bags.

During the entire year, residents and gardeners have three other options for the disposal of leaves:

LEAVE THEM—Shred leaves directly into your grass with a lawn mower (preferably a mulching lawn mower) where they will add nutrients, lighten the soil, and increase water retention. Or shred in your driveway and use as mulch. For more information, see www.LELENY.org.



COMPOST THEM

Add fallen leaves and other yard waste to a backyard compost pile. For information about composting, see <http://environment.westchestergov.com/>.

DUMP THEM

You may take leaves, bagged or loose, to the DPW transfer station on Fayette Avenue.

Village of Mamaroneck Garbage & Rubbish Pickup Schedule & Bulk Metal Pickup Districts

The Number before each street denotes the District Number for Bulk Metal Pickup

GARBAGE & RUBBISH PICKUP SCHEDULE

- = Monday / Thursday
- = Tuesday / Friday
- = 7 Days a Week

BULK METAL PICKUP

- DISTRICT 1—1st Wednesday of the month
- DISTRICT 2—2nd Wednesday of the month
- DISTRICT 3—3rd Wednesday of the month
- DISTRICT 4—4th Wednesday of the month

3 ALDA RD	2 FENIMORE RD 500-810	2 LIBRARY LN	2 ROCKLAND AVE 505-808
2 ALLING ST	THRUWAY TO TRAIN STA	4 LINDEN ST	1 ROCKRIDGE RD NO #4
1 ANDREW ST	2 FENIMORE RD 101-215	2 LIVINGSTON AVE	4 ROSE AVE
4 ANITA LN	PALMER TO POST RD	4 LORENA ST	4 ROSE LN
1 ARLINGTON ST	2 FENIMORE RD 304-440	1 LORRAINE ST	3 ROYAL PL
1 ARTHUR ST	PALMER TO BISHOP	1 LOUIS ST	3 RUSHMORE AVE
2 BALDWIN PL	4 FIFTH ST	1 LOUISE AVE	4 RYEWOOD FARM DR
4 BARBARA LN	1 FIRST ST	2 MADISON ST	2 SAND ST
BARRY AVE N 600-811	3 FLAGLER DR	1 MAMARONECK AVE 0-499	1 SAXON DR
1 BARRY AVE N 501-511	4 FLORENCE ST	2 MAMARONECK AVE. 0-499	3 SEAHAVEN DR
4 BARRY AVE N 115-467	3 FOREST AVE	3 MAMARONECK AVE. 0-499	1 SECOND ST
3 BARRY AVE S	4 FOURTH ST	4 MAMARONECK AVE. 0-499	3 SENEY AVE
3 BARRYMORE LN	4 FRANK AVE	1 MAMARONECK AVE 500-933	3 SEVEN OAKS LN
3 BAYHEAD DR	4 FRANKLIN AVE	1 MAMARONECK AVE 934-1676	3 SHADOW LN
4 BEACH AVE	2 FULTON RD	2 MAPLE AVE	4 SHELBOURNE AVE
1 BEECHWOOD DR	1 GERTRUDE AVE	1 MEADOW ST	1 SHELDRAKE PL
BION ISLAND	1 GIRARD ST	4 MELBOURNE AVE	4 SHERMAN AVE
1 BIRCH HILL LN	1 GRADE ST	1 MSGR GOODWINE	3 SHORE ACRES DR
2 BISHOP AVE	2 GRAND ST	2 MT PLEASANT AVE	4 SHORT ST
3 BLEEKER AVE	1 GRANT TERR	2 MUNRO AVE	3 SKIBO LN
3 BOSTON EAST 144-192	3 GREACEN LN	3 NAUTILUS LN	4 SOPHIA ST
3 BOSTON EAST 193-566	3 GREACEN PT RD	1 NELSON ST	1 SOUNDVIEW AVE
3 BOSTON EAST 159-951	3 GREENHAVEN 515-545	1 NEW ST	3 SOUNDVIEW DR
3 BOSTON EAST 954-1500	3 GREEN MEADOW LN	3 NINE ACRES LN	4 SPENCER PL
2 BOSTON W 132-222	1 GROVE ST	2 NORTHROP AVE	4 SPRUCE ST
2 BOSTON W 406-516	3 GUION DR	1 NOSTRAND AVE	4 STANDISH PL
2 BOSTON W 680-1015	3 HALL ST	3 OAK LN UP TO #11	2 STANLEY AVE
1 BRADFORD AVE	4 HALSTEAD AVE 123-453	3 OAKHURST RD	4 STAUB CT
1 BRADLEY ST	4 HALSTEAD AVE 501-827	3 OAKWOOD RD	4 STERLING AVE
3 BREEVOORT LN	829 PU ON WAGNER	2 OGDEN AVE	3 STILES AVE
4 BROOK ST	4 HALSTEAD AVE 900-1515	3 OLD BOST POST RD	4 STONEYBROOK AVE
2 CARPENTER PL	1 HAMPSHIRE RD	OLD POST LANE	3 STUART AVE
4 CARROLL AVE	3 HARBOR HILL	1 OLD W PLAINS	4 SUNNYSIDE AVE
1 CEDAR ST	HARBOR ISLAND	4 ORCHARD ST	1 SUNSET RD
2 CENTER AVE	2 HARMON DR	3 ORIENTA AVE	3 SYLVAN AVE
1 CHESTNUT AVE	1 HAROLD ST	4 OSBORNE AVE	3 SYLVAN LN
3 CLAFLIN AVE	4 HARRISON AVE	2 PALMER AVE 118-389	3 TAYLORS LN
3 CLUBWAY	2 HEATHCOTE AVE	2 PALMER AVE	1 TERESA LN
3 COLONIAL CT	4 HENRY AVE	428 TO RICHBELL	1 THIRD ST
2 CONCORD AVE	2 HICKORY GROVE DR	2 PALMER CT	4 TOMPKINS AVE
3 CONSTABLE DR	2 HIGHLAND DR	2 PALMER TERR	3 TONI LN
3 COOPER AVE	2 HIGHVIEW ST	4 PARK AVE	1 TOP OF THE RIDGE
2 CORTLANDT AVE 405-629	2 HILL ST	3 PARKWAY, THE	1 TRAVERS AVE
& DEAD END 300-398	1 HILLSIDE AVE	2 PELHAM ST	4 TULIP TREE LN
3 COVE ISLAND	4 HINMAN PL	4 PHILLIPS PARK RD	UNDERHILL AVE
3 COVE ROAD	3 HOMMOCKS RD	4 PINE KNOLL LN	4 UNION AVE
3 CREEK RD	4 HORNIDGE RD	4 PINE ST	1 URBAN ST
3 CRESCENT, THE	1 HOWARD AVE	3 PIRATES COVE	4 VALLEY PL
1 CROWN CT	2 HOYT AVE	2 PLAZA AVE	1 VAN RANST PL
1 DEERFIELD LN 2-7 TOM	4 HUNTER ST	E PLAZA-BILOTTA'S	1 VILLA AVE
2 DELANCEY AVE	3 INDIAN COVE RD	3 PORT DR	4 WAGNER AVE
1 DERMAN AVE	1 JAMES ST	3 POST LN	4 WAGNER AVE N
1 DRURY DR	1 N JAMES ST	2 PROSPECT AVE 121-347	4 WALNUT AVE
4 DUBOIS AVE	1 JEFFERSON AVE	2 PROSPECT AVE 405-731	3 WALTON AVE
3 EAGLE KNOLLS RD	4 JENSEN AVE	J CTR/FEN	4 WARD AVE
4 EDWARD PL	4 KASSEL COURT	4 PROSPECT AVE E	1 WARREN AVE
1 ELLIOT AVE	4 KEELER AVE	3 PROTANO LN	2 WASHINGTON ST
1 ELLIS PL	1 KNICKERBOCKER AVE	2 RAILROAD WAY	2 WAVERLY AVE
4 ENGLISH PL	1 KNOLLWOOD AVE	1 RALEIGH RD	4 WEST ST
3 FAIRWAY AVE	1 LANGDON LN	1 RALPH AVE	1 WILLOW ST
3 FAIRWAY GREEN	4 LAURA JOY CIR	2 REVERE RD	1 WINFIELD AVE
3 FAIRWAY LN	3 LAWN TERR	2 RICHBELL RD	1 WOOD ST
3 FAIRWAY PL	1 LAWRENCE AVE	1 RIVER ST	2 WOODBINE AVE
2 FAYETTE AVE	1 LESTER AVE	2 ROCKLAND AVE 105-214	

Village of Mamaroneck Composting Program

Why Recycle Food Scraps?

Food scraps are one of the largest components of trash sent to landfills and incinerators. However, food scraps are not trash, they are a resource that can be turned into useful compost. Recycling food scraps into compost captures their nutrients and energy and returns them to the environment.

Composting food scraps turns that story around! Instead of wasting energy trying to burn food, or creating methane from landfilling it, composting food scraps produces a useful and valuable product that gives back to our nutrient life cycle resulting in cleaner soil, water and air.

What Is Compost?

When purchasing a bag of potting soil or observing your landscaper putting down "dirt" you are using compost.

Compost benefits our landscape by maximizing plant growth, preventing soil erosion and mitigating the frequency of water, fertilizer and pesticide use.

By recycling your food scraps you are reducing waste and creating compost—a double win!

Why is it important to follow the rules?

If an item not accepted as part of this program is mixed in with the waste, the entire truck load is considered 'contaminated'. Contaminated loads are rejected by the composting facility and will be reintroduced into the normal waste stream. **It is very important to not put anything but accepted items in the compost drop off bins.**

Here's How To Do It:

1. **COLLECT** your food scraps in a countertop pail. Although not required, you may line your pail with a compostable bag—please no plastic bags. Compostable bags are available for purchase (roll of 25 bags for \$2.00/roll) at the Village of Mamaroneck Department of Public Works office (313 Fayette Ave). Please bring cash or a check for payment.
2. Most residents will fill the countertop pail with food scraps 3-4 times per week. Therefore it is suggested that residents also have a larger bin to **TRANSFER** food scraps into for weekly storage. This larger bin can also be used for transportation of food scraps to the Recycling Center. It is recommended that food storage bins be kept indoors—either in the house or in the garage.
3. **BRING** your transportation bin to the Compost Program drop-off bins to dispose of your food scraps as often as needed. There is no charge to drop off food scraps.

All material collected is brought to a commercial composting facility where it is turned into compost.



Drop-off Location & Hours:

The Compost Program drop-off bins are at the Recycling Center (313 Fayette Ave).

Regular Hours:

Monday-Friday 7am-3:30pm

Extended Hours:

Monday-Friday 3:30pm-5pm & Saturday 9am-1pm

Hours of operation are subject to change without notice, particularly the extended hours. The Recycling Center is closed for holidays.

ACCEPTED ITEMS:

ALL FOOD, including:

- Fruits and Vegetables (remove stickers, bands, ties)
- Meat and Poultry (bones ok)
- Fish and Shellfish (shells ok)
- Dairy Products
- Bread and Pasta
- Rice and Grains
- Egg Shells
- Chips and Snacks
- Nuts and Seeds
- Leftover, Spoiled and Expired Food (cooked ok)
- Coffee Grounds (paper filters ok)
- Tea Bags (no staples)
- Paper Towels and Napkins
- Cut Flowers
- Compostable Bags (no plastic bags)



ITEMS NOT ACCEPTED:

- **Plastic bags, plastic packaging and wrappers are never allowed** in the bins. Plastic does not biodegrade and therefore will contaminate the compost. Use only compostable bags, paper bags or no bags.
- **Baby/Hand wipes are never allowed** in the bins. They are synthetic, do not biodegrade and will contaminate the compost.
- **NO PET WASTE.**

If unsure about an item, please call (914) 777-7745 or email us before putting it in the bin: Sanitation@vomny.org

STARTER KITS:

Starter kits can be purchased at the Village of Mamaroneck Department of Public Works office (313 Fayette Ave) for \$27 (checks only). Kits include one 2-gallon countertop pail, one 6-gallon home storage & transportation bin and one roll of 25 compostable bags for your pail.

QUESTIONS? Email:

Sanitation@VOMNY.org

THANK YOU for your participation in the Village of Mamaroneck Compost Program!